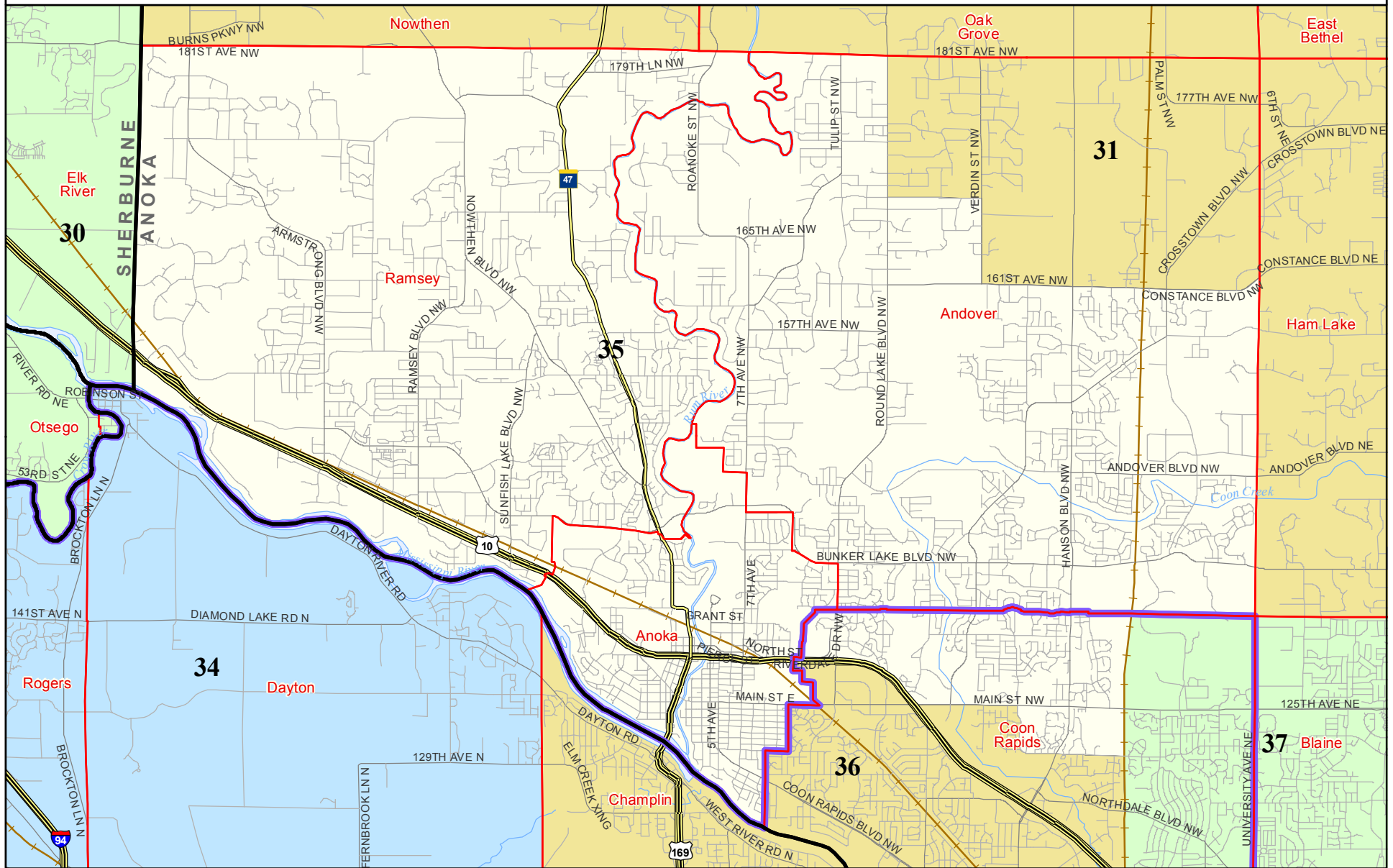
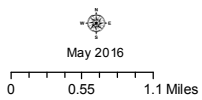


Senate District 35



- Congressional District Boundaries
- County Boundaries
- City / Township Boundaries
- Lakes / Rivers
- Highways
- Major Roads
- Railroads
- Shaded areas represent senate districts



This map shows the Congressional and Legislative Districts ordered by the Special Redistricting Panel in the matter of *Hippert, et al. v. Ritchie, et al.*, No. A11-152, on February 21, 2012, as corrected under *Minnesota Statutes* 2.91, subd. 2 or adjusted under *Minnesota Statutes* 204B.146, subd. 3. Boundaries in unorganized territories may not align with the unorganized territory boundaries from MnGeo and U.S. Census. Road data is from MnDOT and NCompass. Rail data is from MnDOT and OpenStreetMap. Water data is from MN DNR. Visit the OSS Polling Place Finder for definitive precinct and district information for a particular address: <http://pollfinder.sos.state.mn.us>

Minnesota Secretary of State
Elections Division

