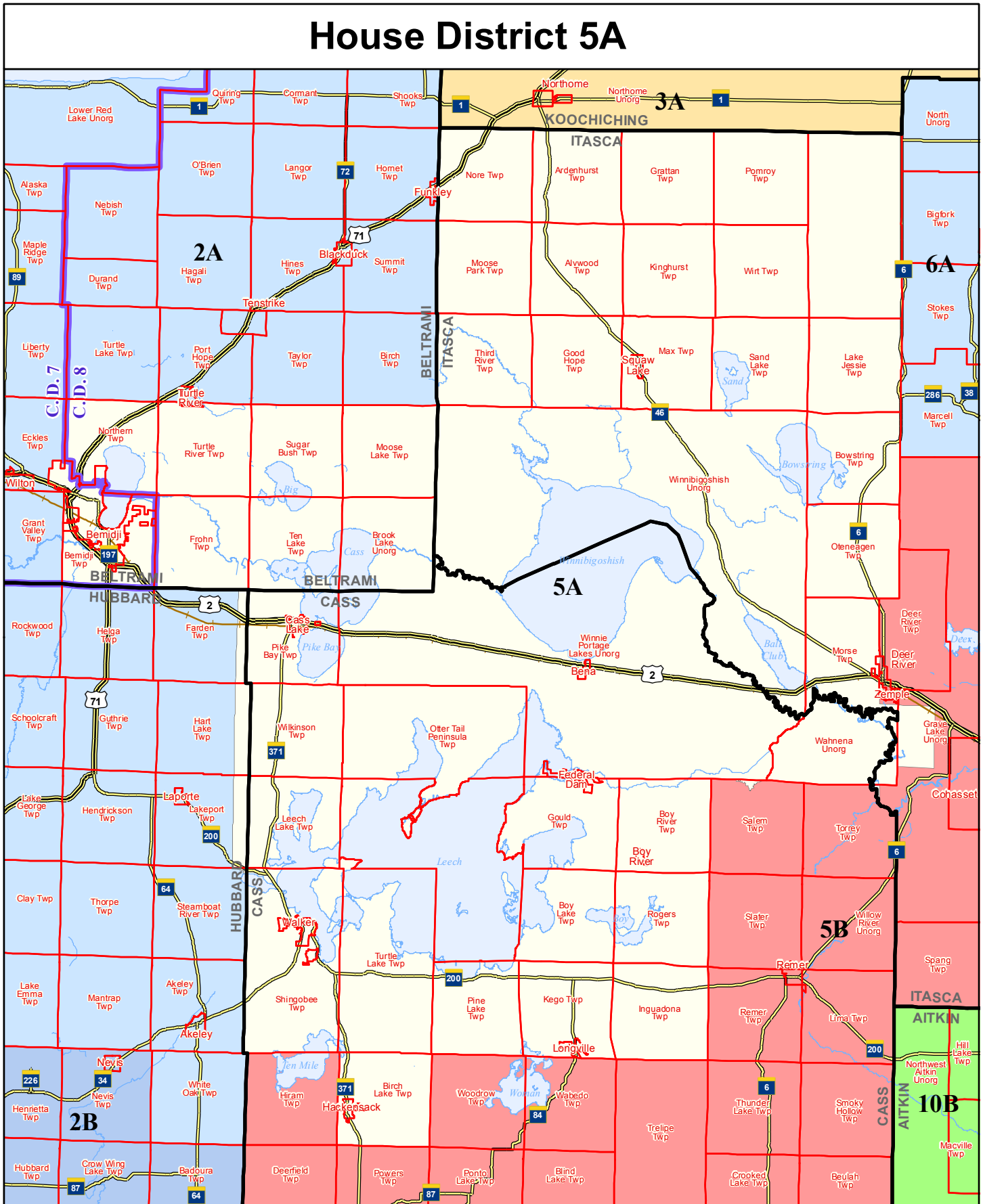


House District 5A



- Congressional District Boundaries
- County Boundaries
- City / Township Boundaries
- Shaded areas represent legislative districts
- Lakes / Rivers
- Highways
- Major Roads
- Railroads



Minnesota Secretary of State

July 2017



Elections Division

0 3 6 Miles

This map shows the Congressional and Legislative Districts ordered by the Special Redistricting Panel in the matter of *Hippert, et al. v. Ritchie, et al.* No. A11-152, on February 21, 2012, as corrected under *Minnesota Statutes* 2.91, subd. 2 or adjusted under *Minnesota Statutes* 204B.146, subd. 3. Boundaries in unorganized territories may not align with the unorganized territory boundaries from MnGeo and U.S. Census. House districts that fall in the same Senate district use different shades of the same color. Road data is from Mn/DOT and NCompass. Rail data is from Mn/DOT and OpenStreetMap. Water data is from MN DNR. Visit the OSS Polling Place Finder for definitive precinct and district information for a particular address: <http://pollfinder.sos.state.mn.us>