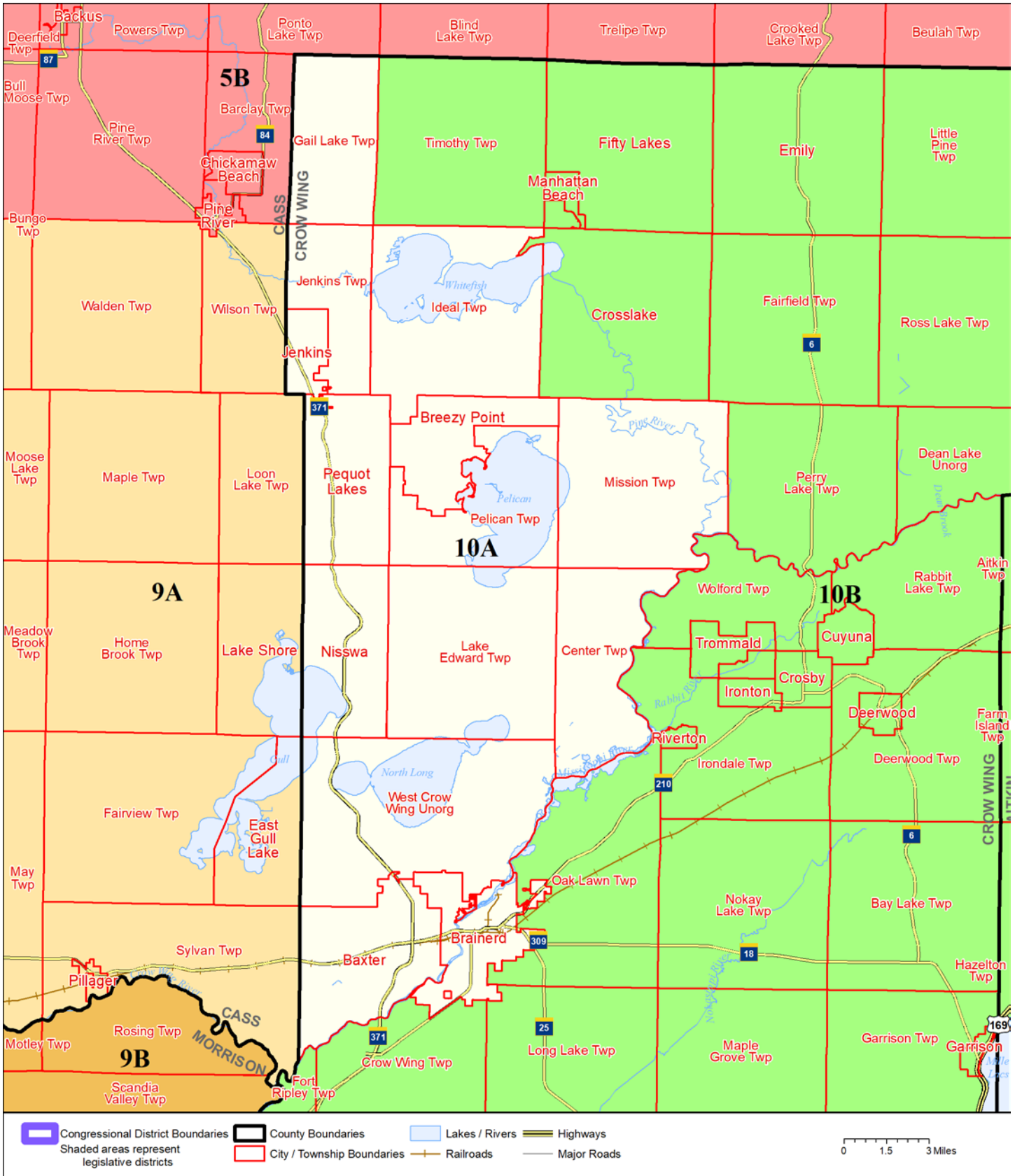


Legislative District 10A



Published by Office of the Minnesota Secretary of State, Elections Division. Current as of December 2019. Look up districts & polling places at <https://pollfinder.sos.state.mn.us>

About this map

This map shows the Congressional and Legislative Districts ordered by the Special Redistricting Panel in the matter of *Hippert, et al. v. Ritchie, et al*, No. A11-152, on February 21, 2012, as corrected under *Minnesota Statutes* 2.91, subd. 2 or adjusted under *Minnesota Statutes* 204B.146, subd. 3. Derived from precinct boundaries that are maintained by the Secretary of State and available for download at the [Minnesota Geospatial Commons](https://gisdata.mn.gov) (<https://gisdata.mn.gov>). Road data is from Mn/DOT and U.S. Census (Statewide) and NCompass (Metro). Rail data is from Mn/DOT. Water data is from MN DNR.

District Description

Territory of Minnesota Legislative District 10A:

- This area in Crow Wing County:
 - Baxter
 - These precincts in Brainerd:
 - BRAINERD W-1 P-1
 - BRAINERD W-1 P-2
 - BRAINERD W-2 P-1
 - BRAINERD W-2 P-2
 - BRAINERD W-3 P-1
 - BRAINERD W-3 P-2
 - BRAINERD W-4 P-1
 - BRAINERD W-4 P-2
 - Breezy Point
 - Center Twp
 - These precincts in Crow Wing Twp:
 - CROW WING TWP P-2
 - Gail Lake Twp
 - Ideal Twp
 - Jenkins
 - Jenkins Twp
 - Lake Edward Twp
 - Mission Twp
 - Nisswa
 - Pelican Twp
 - Pequot Lakes
 - These precincts in unorganized territory:
 - BLUE PRECINCT
 - RED PRECINCT
 - WHITE PRECINCT