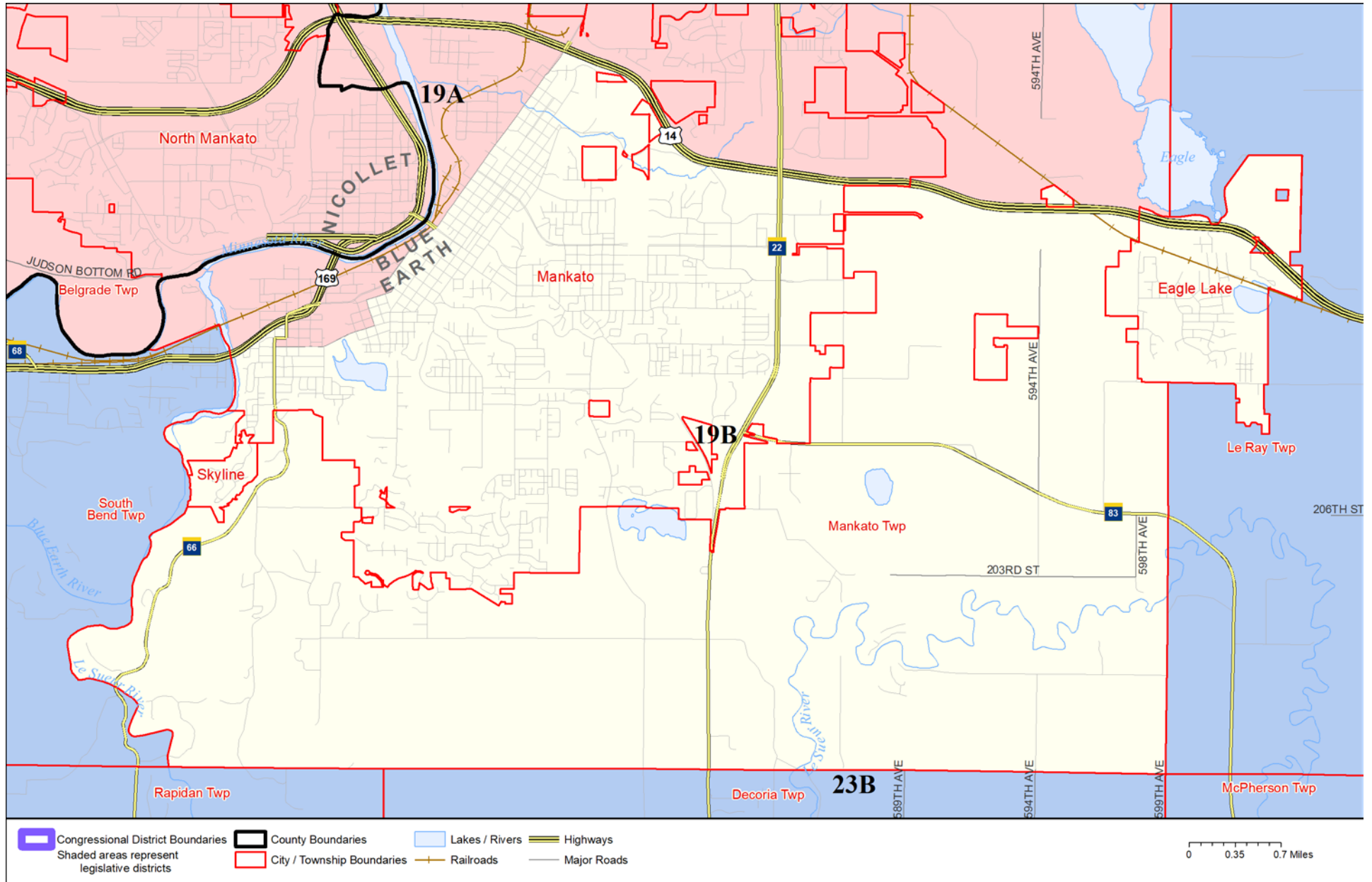


Legislative District 19B



Published by Office of the Minnesota Secretary of State, Elections Division. Current as of December 2019. Look up districts & polling places at <https://pollfinder.sos.state.mn.us>

About this map

This map shows the Congressional and Legislative Districts ordered by the Special Redistricting Panel in the matter of *Hippert, et al. v. Ritchie, et al*, No. A11-152, on February 21, 2012, as corrected under *Minnesota Statutes* 2.91, subd. 2 or adjusted under *Minnesota Statutes* 204B.146, subd. 3. Derived from precinct boundaries that are maintained by the Secretary of State and available for download at the [Minnesota Geospatial Commons](https://gisdata.mn.gov) (<https://gisdata.mn.gov>). Road data is from Mn/DOT and U.S. Census (Statewide) and NCompass (Metro). Rail data is from Mn/DOT. Water data is from MN DNR.

District Description

Territory of Minnesota Legislative District 19B:

- This area in Blue Earth County:
 - Eagle Lake
 - These precincts in Mankato:
 - MANKATO W-01 P-11
 - MANKATO W-01 P-12
 - MANKATO W-01 P-14
 - MANKATO W-02 P-15
 - MANKATO W-03 P-07
 - MANKATO W-03 P-08
 - MANKATO W-03 P-09
 - MANKATO W-04 P-10
 - MANKATO W-04 P-10A
 - MANKATO W-04 P-13
 - MANKATO W-05 P-03
 - MANKATO W-05 P-04
 - MANKATO W-05 P-05
 - MANKATO W-05 P-06
 - These precincts in Mankato Twp:
 - MANKATO TWP P-2
 - Skyline