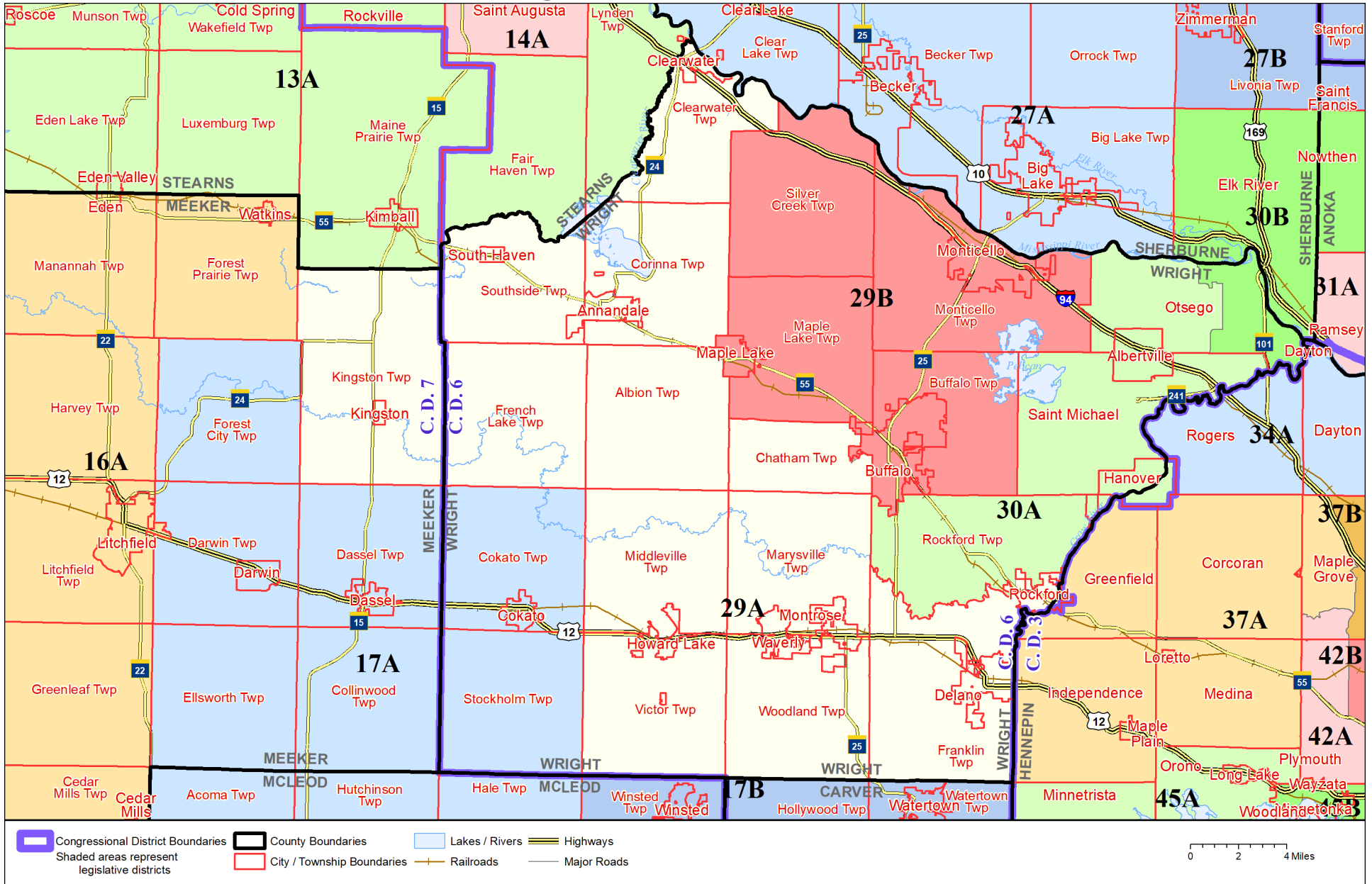


Legislative District 29A



Published by Office of the Minnesota Secretary of State, Elections Division. Current as of February 2022. Look up districts & polling places at <https://pollfinder.sos.state.mn.us>

About this map

This map shows the Congressional and Legislative Districts ordered by the Special Redistricting Panel in the matter of *Watson, et al. v. Simon, et al*, No. A21-0243 and A21-0546, on February 15, 2022, as modified by 2022 Session Laws Chapter 92, as corrected under *Minnesota Statutes* 2.91, subd. 2, or as adjusted under *Minnesota Statutes* 204B.146, subd. 3. Boundaries from LCC-GIS derived from U.S. Census. Road data is from Mn/DOT and U.S. Census (Statewide) and NCompass (Metro). Rail data is from Mn/DOT. Water data is from MN DNR.

District Description

Territory of Minnesota Legislative District 29A:

- This area in Hennepin County:
 - Rockford
- This area in Meeker County:
 - Kingston
 - Kingston Twp
- This area in Wright County:
 - Albion Twp
 - Annandale
 - These precincts in Chatham Twp:
 - CHATHAM TOWNSHIP P1
 - Clearwater
 - Clearwater Twp
 - Corinna Twp
 - Delano
 - Franklin Twp
 - French Lake Twp
 - Howard Lake
 - Marysville Twp
 - Middleville Twp
 - Montrose
 - Rockford
 - These precincts in Rockford Twp:
 - ROCKFORD TOWNSHIP P2
 - South Haven
 - Southside Twp
 - Victor Twp
 - Waverly
 - Woodland Twp