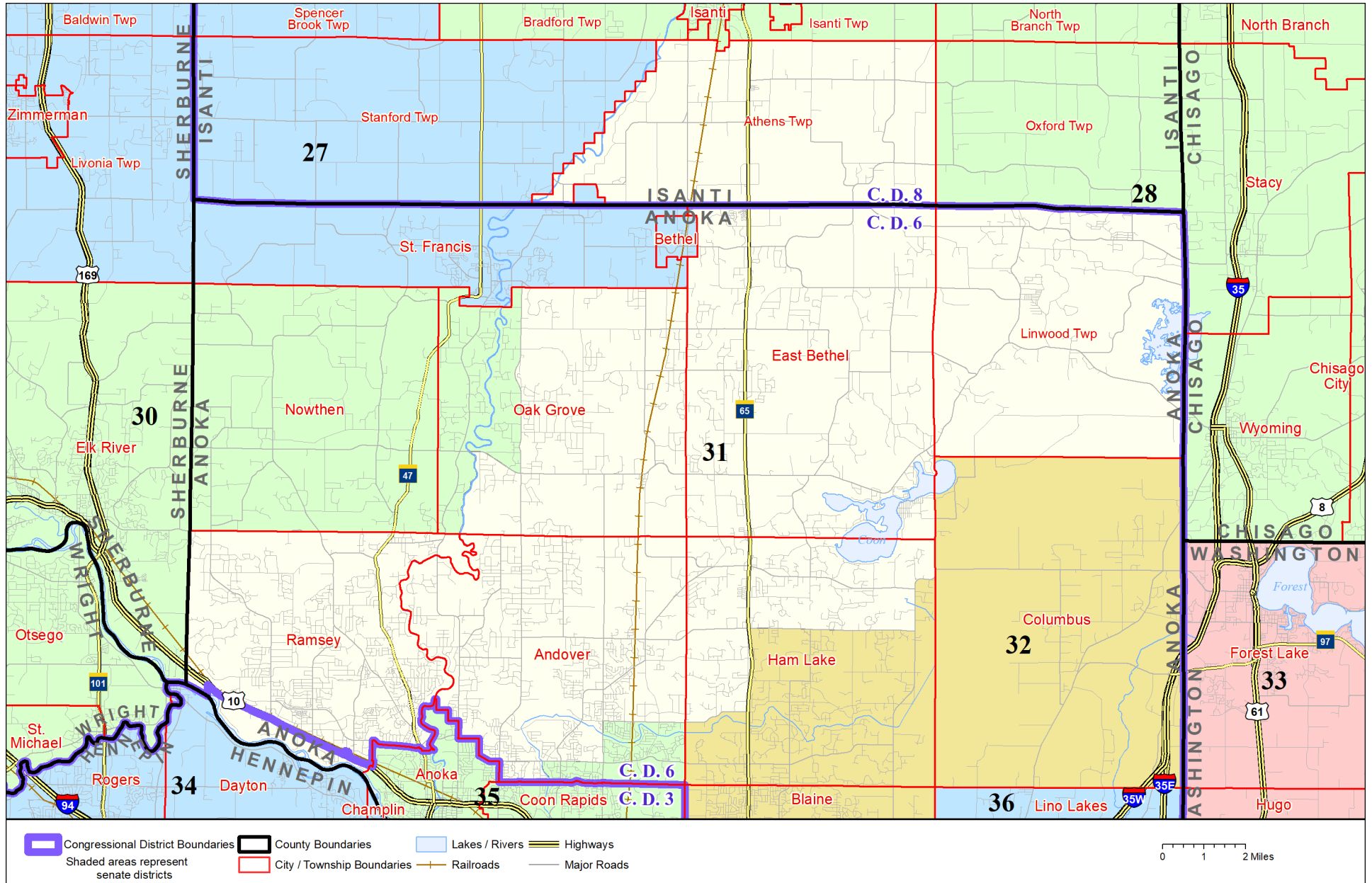


Senate District 31



Published by Office of the Minnesota Secretary of State, Elections Division. Current as of February 2024. Look up districts & polling places at <https://pollfinder.sos.mn.gov>

About this map

This map shows the Congressional and Legislative Districts ordered by the Special Redistricting Panel in the matter of *Wattson, et al. v. Simon, et al.*, No. A21-0243 and A21-0546, on February 15, 2022, as modified by 2022 Session Laws Chapter 92, as corrected under *Minnesota Statutes* 2.91, subd. 2, or as adjusted under *Minnesota Statutes* 204B.146, subd. 3. Derived from precinct boundaries that are maintained by the Secretary of State and available for download at the [Minnesota Geospatial Commons](https://gisdata.mn.gov) (<https://gisdata.mn.gov>). Road data is from Mn/DOT and U.S. Census (Statewide) and NCompass (Metro). Rail data is from Mn/DOT. Water data is from MN DNR.

District Description

Territory of Minnesota Senate District 31:

- This area in Anoka County:
 - These precincts in Andover:
 - ANDOVER P-1
 - ANDOVER P-2
 - ANDOVER P-3
 - ANDOVER P-4
 - ANDOVER P-5
 - ANDOVER P-6
 - ANDOVER P-7
 - ANDOVER P-8
 - East Bethel
 - These precincts in Ham Lake:
 - HAM LAKE P-1
 - HAM LAKE P-3
 - Linwood Twp
 - These precincts in Oak Grove:
 - OAK GROVE P-1
 - OAK GROVE P-3
 - OAK GROVE P-4
 - Ramsey
- This area in Isanti County:
 - Athens Twp