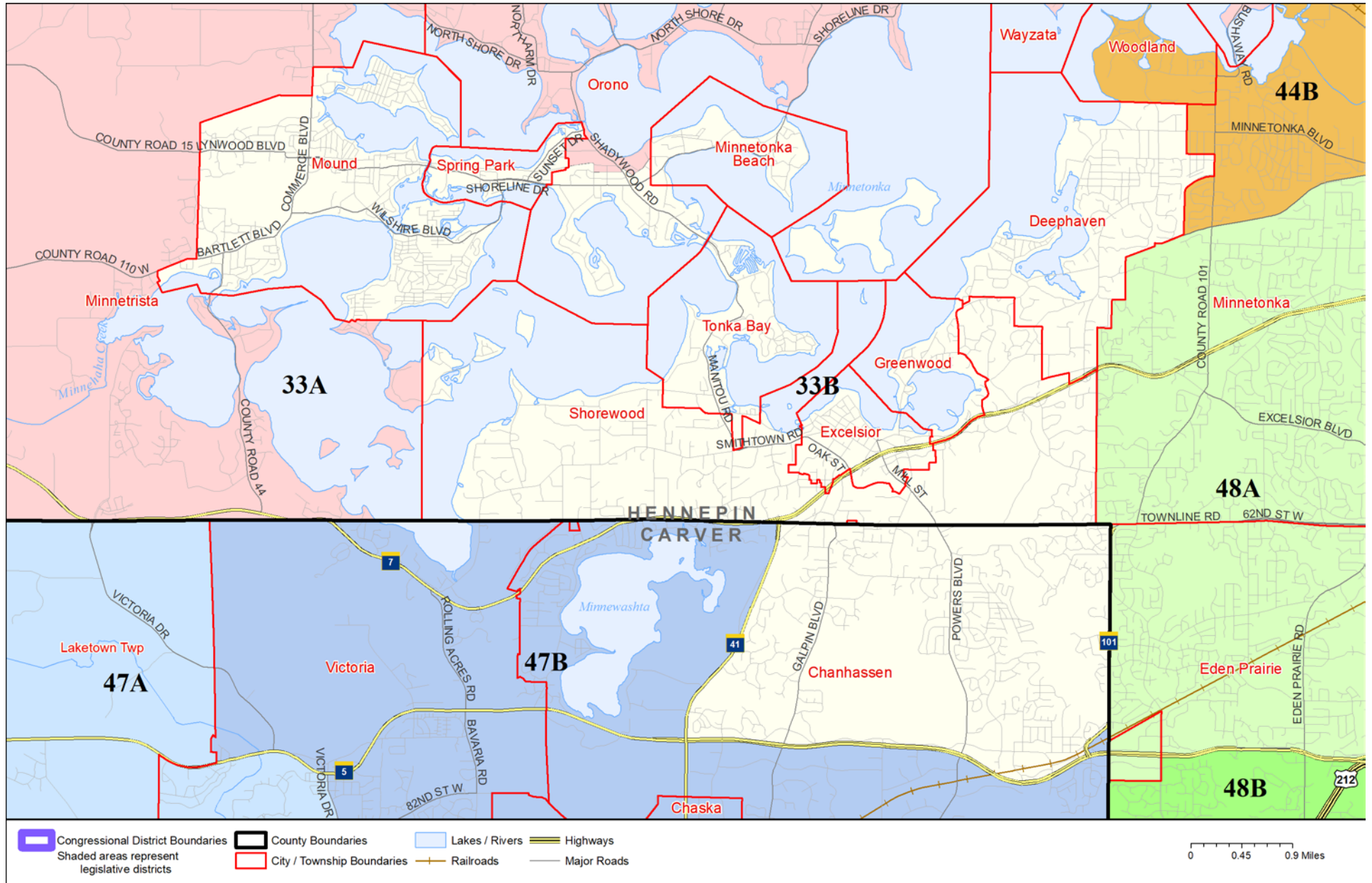


Legislative District 33B



Published by Office of the Minnesota Secretary of State, Elections Division. Current as of December 2019. Look up districts & polling places at <https://pollfinder.sos.state.mn.us>

About this map

This map shows the Congressional and Legislative Districts ordered by the Special Redistricting Panel in the matter of *Hippert, et al. v. Ritchie, et al*, No. A11-152, on February 21, 2012, as corrected under *Minnesota Statutes* 2.91, subd. 2 or adjusted under *Minnesota Statutes* 204B.146, subd. 3. Derived from precinct boundaries that are maintained by the Secretary of State and available for download at the [Minnesota Geospatial Commons](https://gisdata.mn.gov) (<https://gisdata.mn.gov>). Road data is from Mn/DOT and U.S. Census (Statewide) and NCompass (Metro). Rail data is from Mn/DOT. Water data is from MN DNR.

District Description

Territory of Minnesota Legislative District 33B:

- This area in Carver County:
 - These precincts in Chanhassen:
 - CHANHASSEN P-1A
 - CHANHASSEN P-1B
 - CHANHASSEN P-2A
 - CHANHASSEN P-2B
- This area in Hennepin County:
 - These precincts in Chanhassen:
 - CHANHASSEN P-02
 - Deephaven
 - Excelsior
 - Greenwood
 - Minnetonka Beach
 - Mound
 - These precincts in Orono:
 - ORONO P-02
 - Shorewood
 - Spring Park
 - Tonka Bay