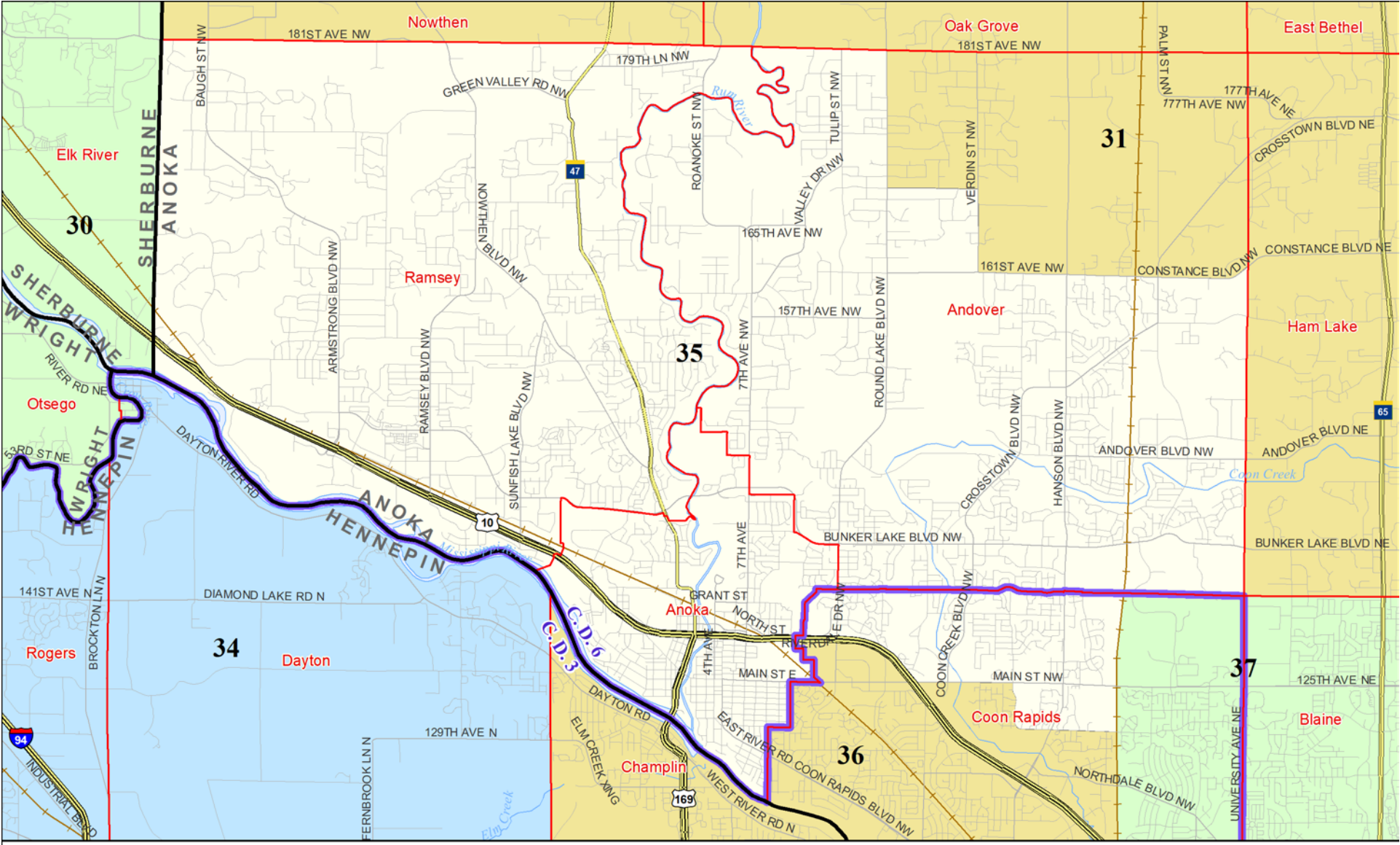
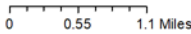


# Senate District 35



Congressional District Boundaries	County Boundaries	Lakes / Rivers	Highways
Shaded areas represent senate districts	City / Township Boundaries	Railroads	Major Roads



Published by Office of the Minnesota Secretary of State, Elections Division. Current as of December 2019. Look up districts & polling places at <https://pollfinder.sos.state.mn.us>

**About this map**  
 This map shows the Congressional and Legislative Districts ordered by the Special Redistricting Panel in the matter of *Hippert, et al. v. Ritchie, et al*, No. A11-152, on February 21, 2012, as corrected under *Minnesota Statutes* 2.91, subd. 2 or adjusted under *Minnesota Statutes* 204B.146, subd. 3. Derived from precinct boundaries that are maintained by the Secretary of State and available for download at the [Minnesota Geospatial Commons](https://gisdata.mn.gov) (<https://gisdata.mn.gov>). Road data is from Mn/DOT and U.S. Census (Statewide) and NCompass (Metro). Rail data is from Mn/DOT. Water data is from MN DNR.

## District Description

Territory of Minnesota Senate District 35:

- This area in Anoka County:
  - These precincts in Andover:
    - ANDOVER P-1
    - ANDOVER P-10
    - ANDOVER P-2
    - ANDOVER P-3
    - ANDOVER P-4
    - ANDOVER P-5
    - ANDOVER P-7
    - ANDOVER P-8
    - ANDOVER P-9
  - Anoka
  - These precincts in Coon Rapids:
    - COON RAPIDS W-1 P-1
    - COON RAPIDS W-1 P-2
    - COON RAPIDS W-2 P-1
  - Ramsey