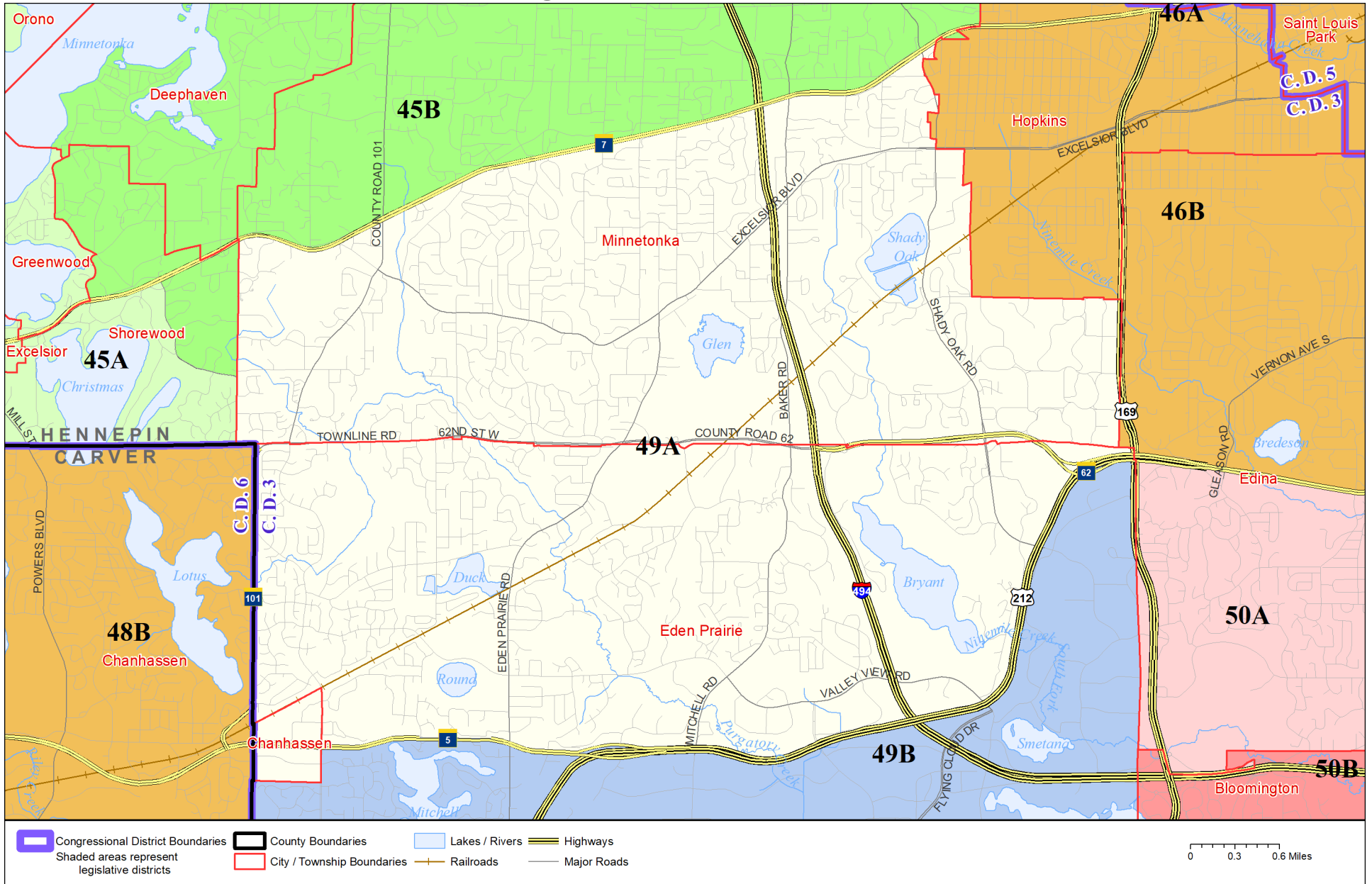


Legislative District 49A



Published by Office of the Minnesota Secretary of State, Elections Division. Current as of February 2022. Look up districts & polling places at <https://pollfinder.sos.state.mn.us>

About this map

This map shows the Congressional and Legislative Districts ordered by the Special Redistricting Panel in the matter of *Wattson, et al. v. Simon, et al*, No. A21-0243 and A21-0546, on February 15, 2022, as modified by 2022 Session Laws Chapter 92, as corrected under *Minnesota Statutes* 2.91, subd. 2, or as adjusted under *Minnesota Statutes* 204B.146, subd. 3. Boundaries from LCC-GIS derived from U.S. Census. Road data is from Mn/DOT and U.S. Census (Statewide) and NCompass (Metro). Rail data is from Mn/DOT. Water data is from MN DNR.

District Description

Territory of Minnesota Legislative District 49A:

- This area in Hennepin County:
 - These precincts in Chanhassen:
 - CHANHASSEN P-01
 - These precincts in Eden Prairie:
 - EDEN PRAIRIE P-01
 - EDEN PRAIRIE P-02
 - EDEN PRAIRIE P-03
 - EDEN PRAIRIE P-04
 - EDEN PRAIRIE P-05
 - EDEN PRAIRIE P-06
 - EDEN PRAIRIE P-07
 - These precincts in Minnetonka:
 - MINNETONKA W-1 P-A
 - MINNETONKA W-1 P-B
 - MINNETONKA W-1 P-C
 - MINNETONKA W-1 P-D
 - MINNETONKA W-4 P-B
 - MINNETONKA W-4 P-C
 - MINNETONKA W-4 P-D
 - MINNETONKA W-4 P-E